

A high-speed photograph of a water droplet hitting a surface, creating a series of concentric ripples. The water is a deep blue color, and the background is a lighter blue gradient.

*Central Los Angeles County (CeLAC)  
Regional Recycled Water Project*

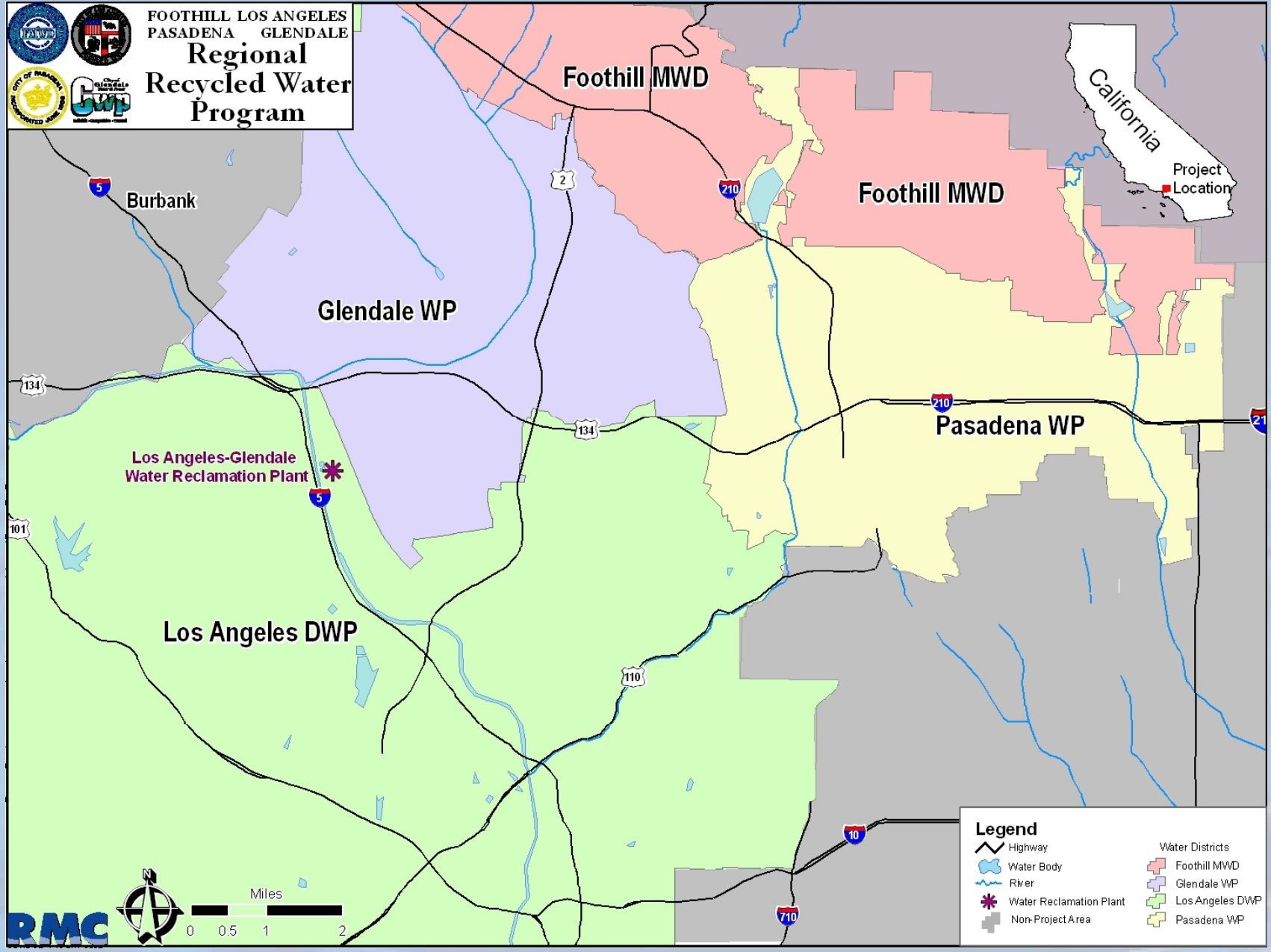
*Foothill Municipal Water District  
Glendale Water & Power  
Los Angeles Dept. of Water & Power  
Pasadena Water & Power*

February 24, 2009

**RMC**



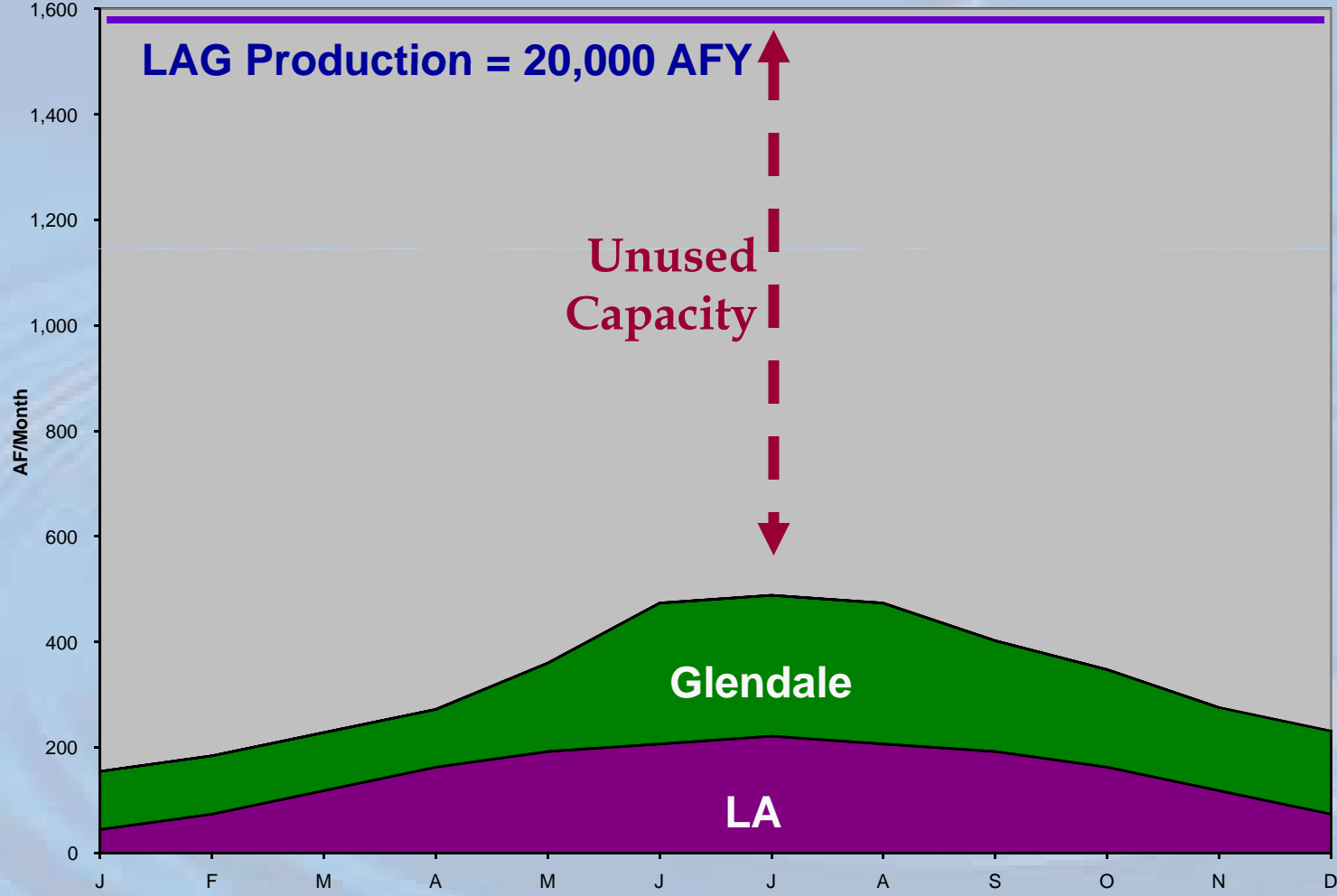
FOOTHILL LOS ANGELES  
PASADENA GLENDALE  
**Regional  
Recycled Water  
Program**



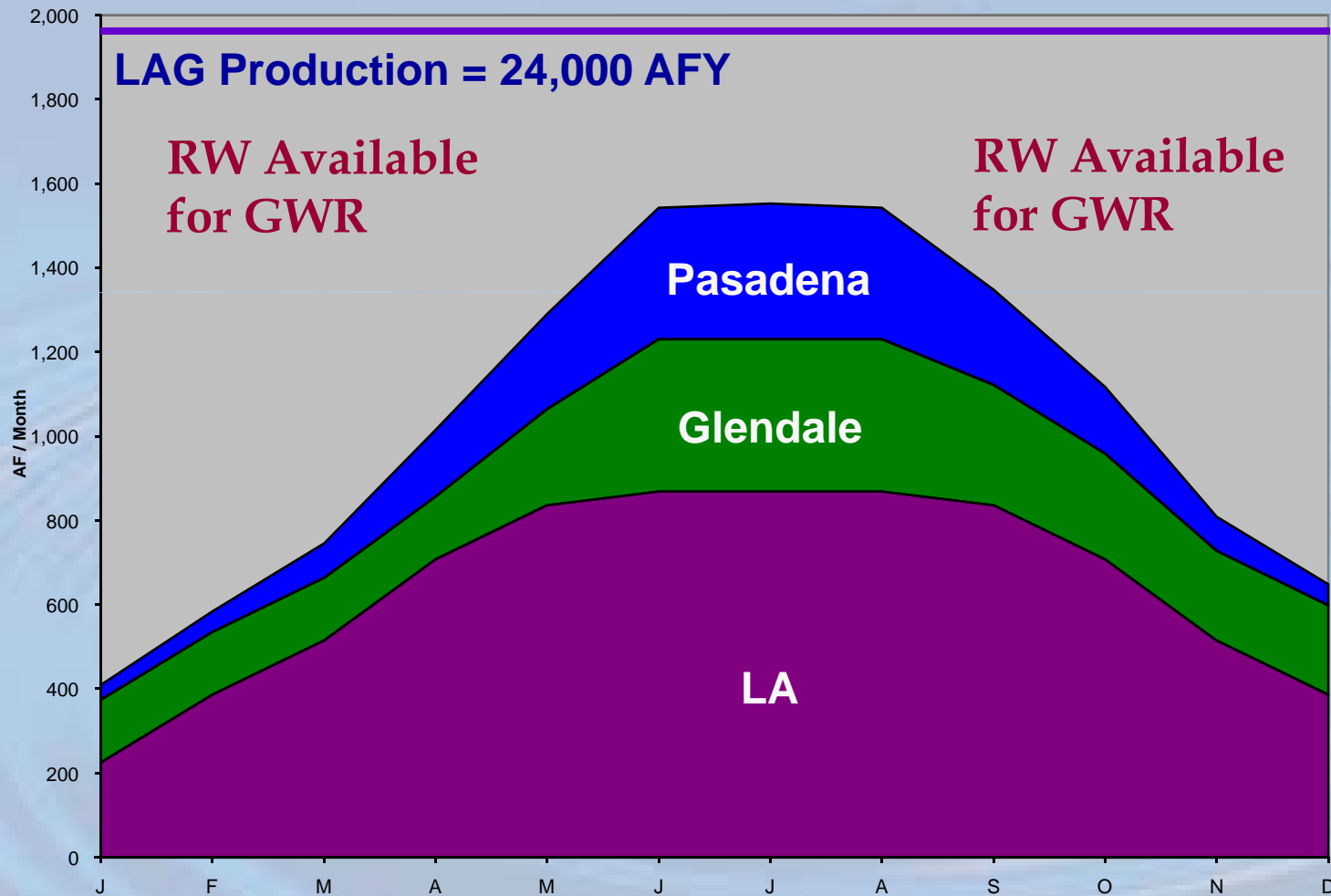
**RMC**

**RMC**

# LA-Glendale WRP Opportunity



# *Vision - Maximize LAG Use by Complementary Urban Recycling and Groundwater Replenishment*





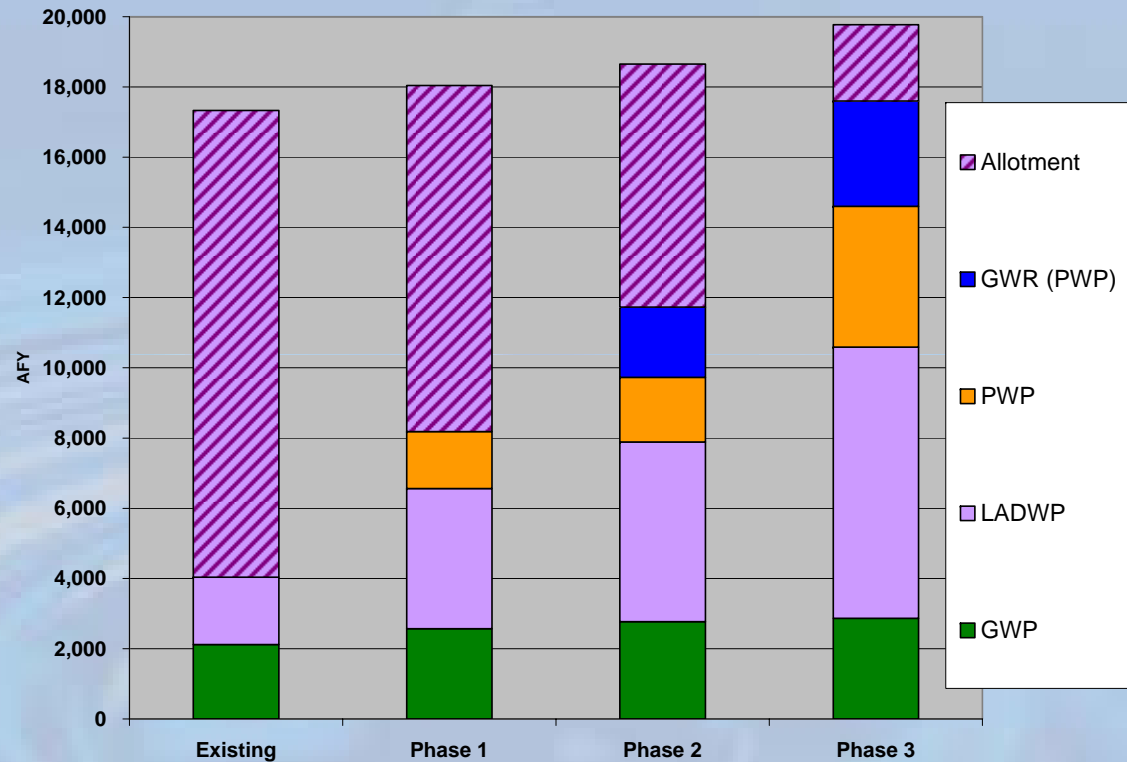






# Overall CeLAC Project Details

- ◆ 13,500 AFY in New Supply
- ◆ Capital Cost Estimate: \$250M



## *Phase 1a Characteristics*

<b>Project</b>	<b>Yield (AFY)</b>	<b>Capital Cost</b>	<b>Comments</b>
Taylor Yard/Cypress Park	50	\$1.2 M	Includes capacity for Tier 1 completion (2,800 AFY) Includes Taylor Yard Parcel C
Griffith Park South	500	\$5.0 M	Includes storage for future expansion
GWR Facility Planning	-	\$0.3 M	Helps optimize early non-potable extensions
<b>Total Phase 1a</b>	<b>550</b>	<b>\$6.5 M</b>	



## *Phase 1a Schedule*

<b>Project</b>	<b>Timeline</b>
Taylor yard & Cypress Park	CP: Design Complete; CEQA 3/09-4/09 TY: Design 7/09-8/09; CEQA 8/09-9/09
Griffith Park South	Design 7/09-12/09; CEQA 12/09-1/10
GWR Facility Planning	8/09 - 1/10



*Central Los Angeles County (CeLAC)  
Regional Recycled Water Project*

*Foothill Municipal Water District  
Glendale Water & Power  
Los Angeles Dept. of Water & Power  
Pasadena Water & Power*

February 24, 2009

**RMC**